

Preliminary Landscape Calculations:

| | Req'd. | Prov'd. |
|---|----------------------|-----------|
| Wrightsville Ave. Streetyard 95 l.f. frontage - 24 l.f. driveways = 71 X 16 (OH-1 District factor) @ 1 canopy tree / 600 s.f. @ 6 shrubs / 600 s.f. | 1278 s.f. 2 13 | 1278 s.f. |

| | | |
|---|---------------------|------------|
| Parking Area Interior - 7266 s.f. x 20% Shading Min. 75% Lg. Shade/Canopy @ 707 s.f. Max. 25% Sm. Shade/Canopy at 314 s.f. | 1390 s.f. 2 1 | 3535 s.f.+ |
|---|---------------------|------------|

Parking Area Perimeter - N/A

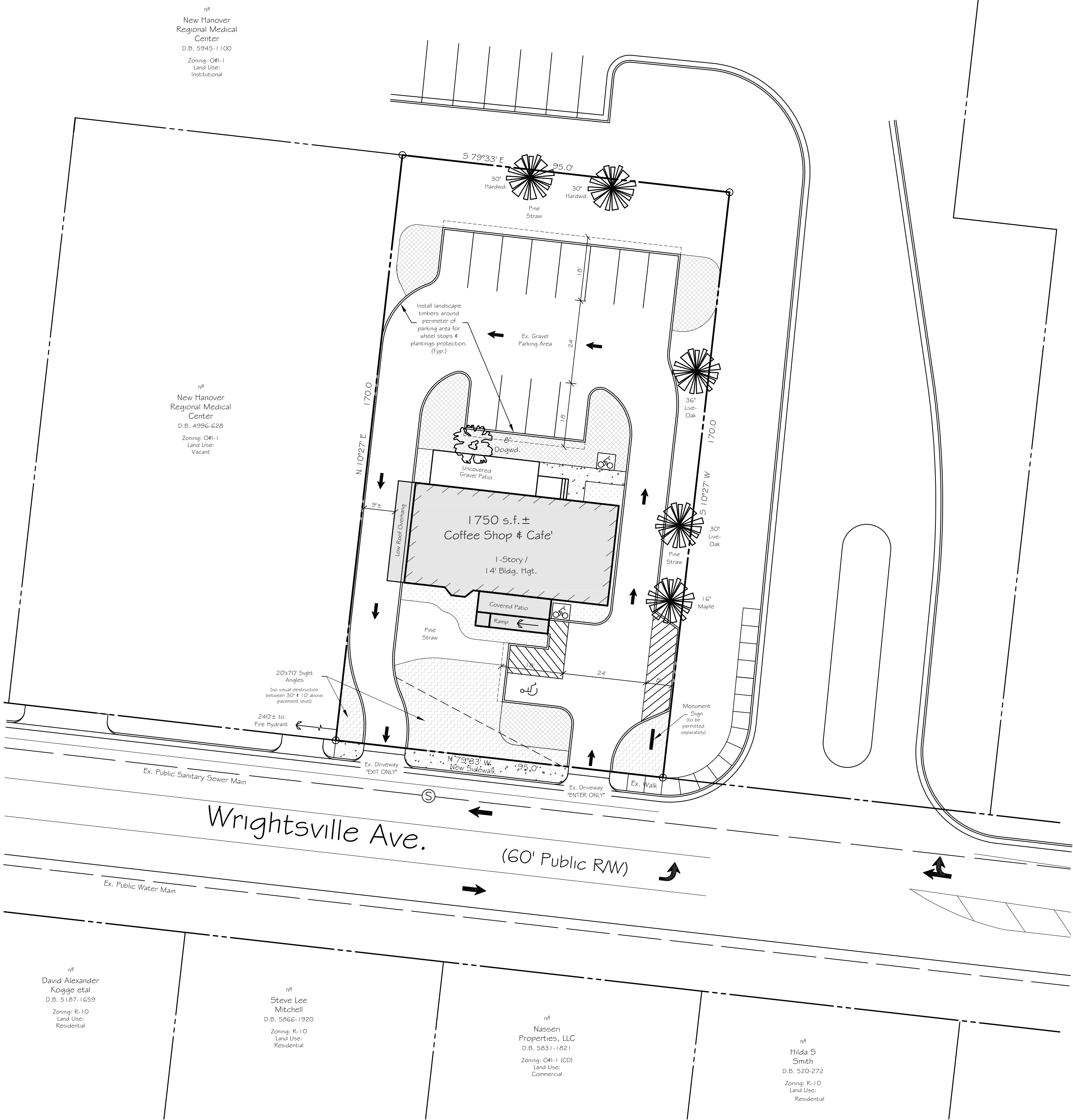
| | | |
|--|----------|-----------|
| Foundation Plantings - 128 l.f. pvmnt. adj. to facades @ 10' facade hgt. X 12% | 154 s.f. | 154+ s.f. |
|--|----------|-----------|

Buffers - N/A

| | | |
|--|---|----|
| Overall Site - 0.4 ac.± development area x 15 trees/ac. | 6 | 6+ |
|--|---|----|

Legend:

 - Streetyard  - Foundation  - Interior Shading



Parking:
52-Seat Restaurant w/ Patio
(40 seats inside & 12 patio seats)
Min req'd @ 1 sp/4 seats = 13
Max perm't'd @ 1 sp/2 seats = 26

** Total Spaces Prov'd. = 13 **

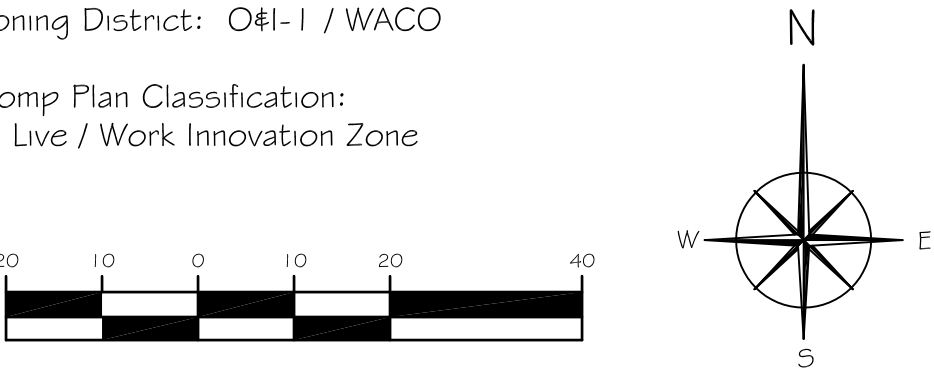
** Total Bike Spaces Prov'd. = 10 **

Existing Surfaces:

| | |
|---------------------|------------|
| Rooftop - | 1980 s.f.± |
| Vehicle Circulation | |
| & Parking - | 7266 s.f.± |
| Total - | 9246 s.f.± |

Lighting Notes:
Site lighting shall be limited to that needed for safety. In all instances, lighting shall be located, angled, shielded, and/or limited in intensity so as to cast no direct light upon adjacent residential properties.

- General Notes:
- NHCo PIN: 314718.40.2018
 - Total Tract Area: 16,150 s.f. (0.37 ac.±)
 - Zoning District: O#1-1 / WACO
 - Comp Plan Classification: Live / Work Innovation Zone



Business Owner:
Social Coffee & Supply Co.
5317 Wrightsville Ave.
Wilmington, NC 28403

Parking
Plan
Date: 06/26/18

Property Addresses: 5317 Wrightsville Avenue
Social Coffee & Supply Co.
Wilmington Township / New Hanover County / North Carolina